

NEW GENERATION RACK CABINET





GT SERIES FREE STANDING CABINET (19'')³

All MirsanRack GT series free standing cabinets are New Generation Rack Cabinets featuring (19'')³ design.

WHY DIFFERENT?

While it is possible to install 19" instruments and equipment only to the front and rear sides of the traditional standard rack cabinets, 19" instruments and equipment can also be installed to the **top**, **bottom** and **sides** of the GT series cabinets thanks to its unique design marked with the symbol (19'')³.

JUST IMAGINE

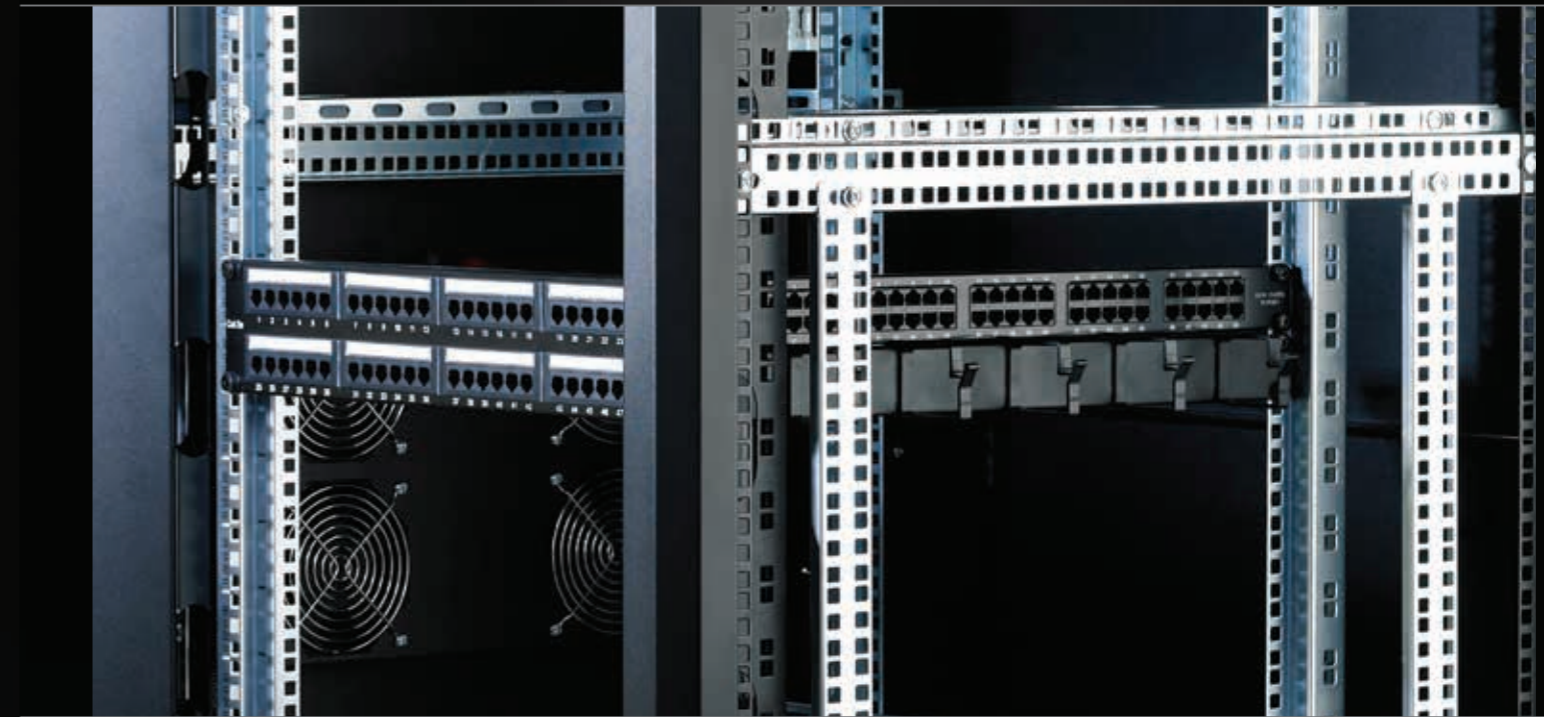
The only available boundary in terms of functionality and flexibility is the imagination as it is possible to install all kinds of 19" accessories, instruments and equipment to the top, bottom and side sections of the cabinet.



CAPACITY ADVANTAGE

The rear sections of instruments and equipment with short length (patch panel, horizontal organizer, etc.) remain completely unoccupied at certain U heights, and lead to waste of space. In GT series cabinets, on the other hand, it is possible to install accessories and equipment with higher length from side panels at the cabinets with U values where equipment with short length are installed.

Thanks to this arrangement, the internal capacity of the cabinet might be used with **100% efficiency**.



COST ADVANTAGE

Thanks to its (19")³ feature, it is possible to install instruments and equipment to the GT series cabinets with U values higher than their height. For example, while it is possible to install only the 42U instruments to a standard cabinet with 42U height, a GT series **42U cabinet** might accommodate **100U** instruments and equipment.

Thanks to this feature, a unique and **unrivaled** cost advantage is achieved.

ALTER YOUR PERSPECTIVE



19" SIDE BRACKETS

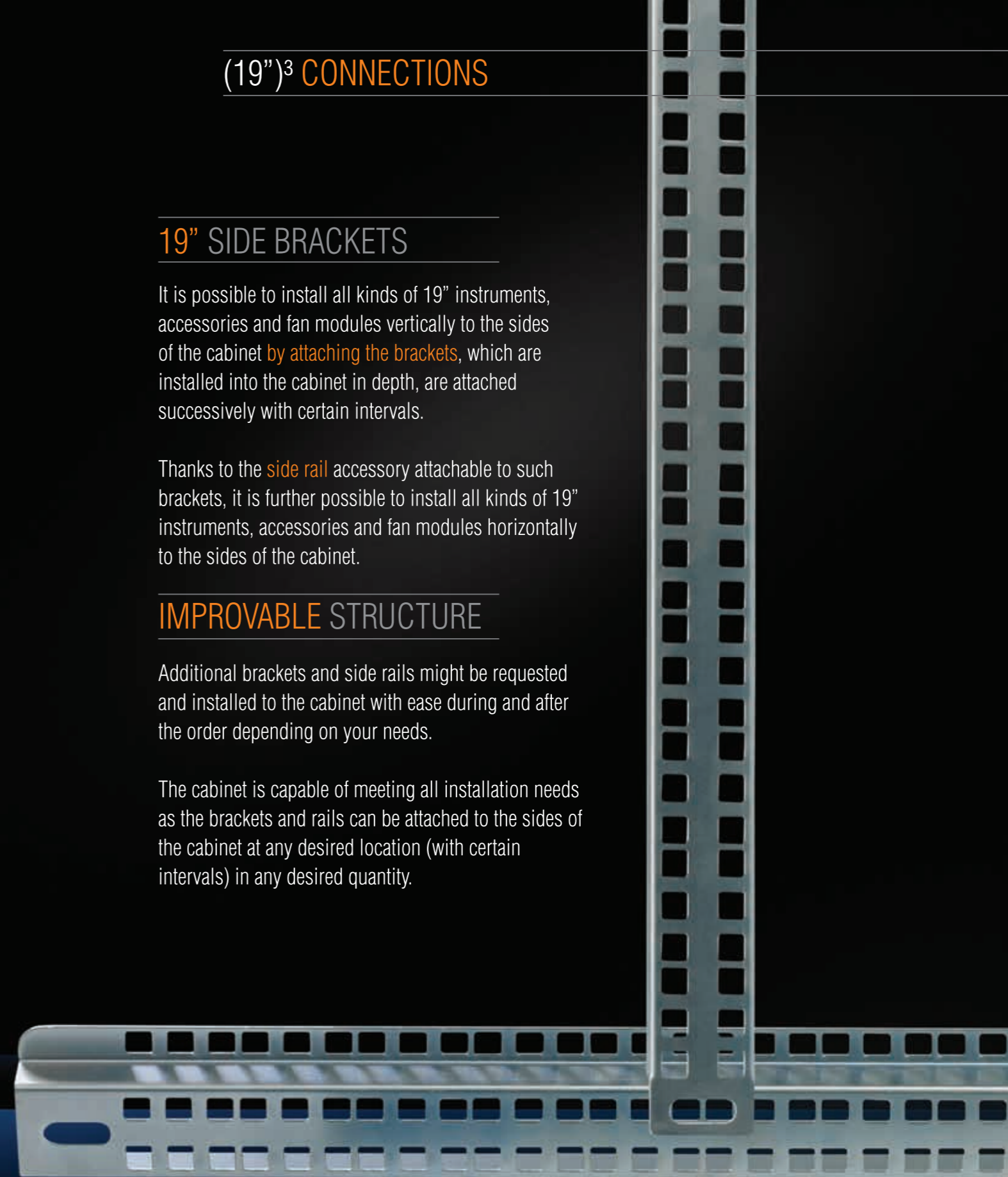
It is possible to install all kinds of 19" instruments, accessories and fan modules vertically to the sides of the cabinet by attaching the brackets, which are installed into the cabinet in depth, are attached successively with certain intervals.

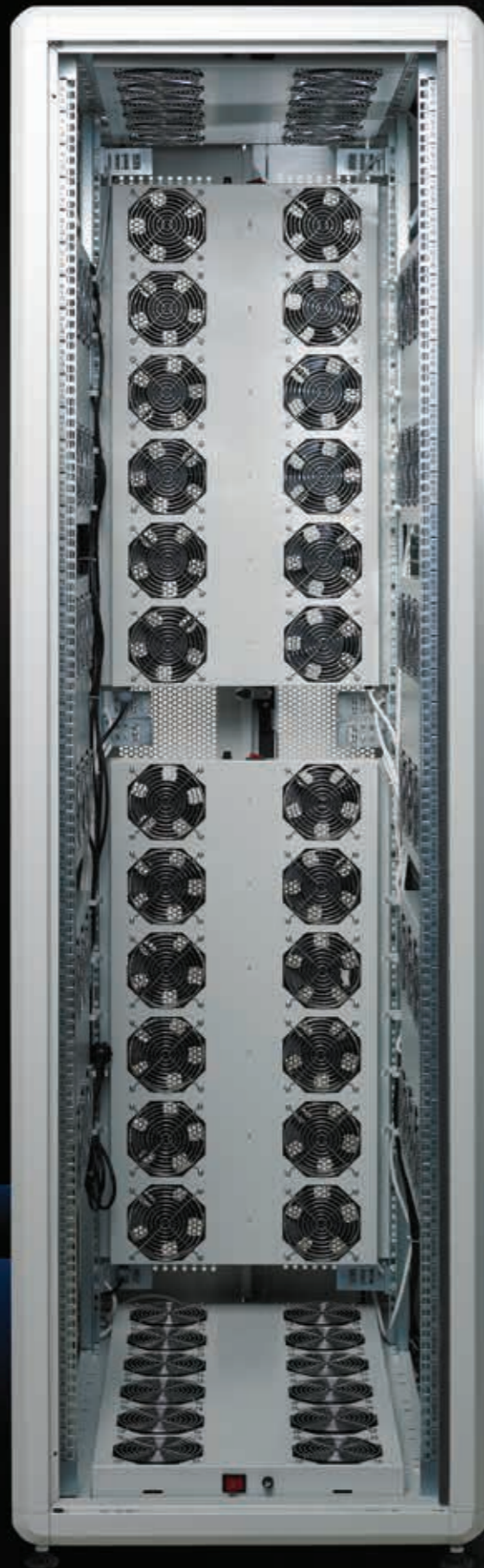
Thanks to the side rail accessory attachable to such brackets, it is further possible to install all kinds of 19" instruments, accessories and fan modules horizontally to the sides of the cabinet.

IMPROVABLE STRUCTURE

Additional brackets and side rails might be requested and installed to the cabinet with ease during and after the order depending on your needs.

The cabinet is capable of meeting all installation needs as the brackets and rails can be attached to the sides of the cabinet at any desired location (with certain intervals) in any desired quantity.





UNLIMITED CONNECTION TERMINALS

19" fan modules can be installed at any desired location at the **top**, **bottom** and **sides** of the cabinet, thus enabling ventilation of the desired spot of the intended instrument with fan module of adequate capacity.

ADDITIONALITY

The cabinets have a **unique** feature for subsequent installation of fan modules. When installing fan modules, it is not necessary to detach and remove the former module. New fan modules might be integrated to the system with ease without disturbing the existing fan modules.

POSSIBILITY OF GRADUAL VENTILATION

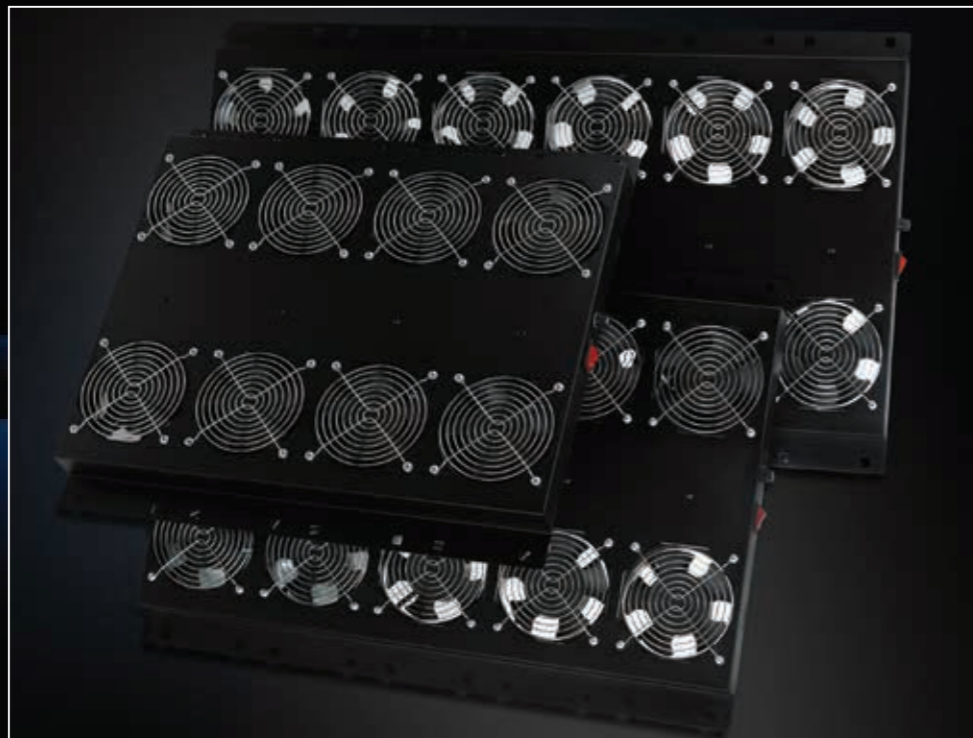
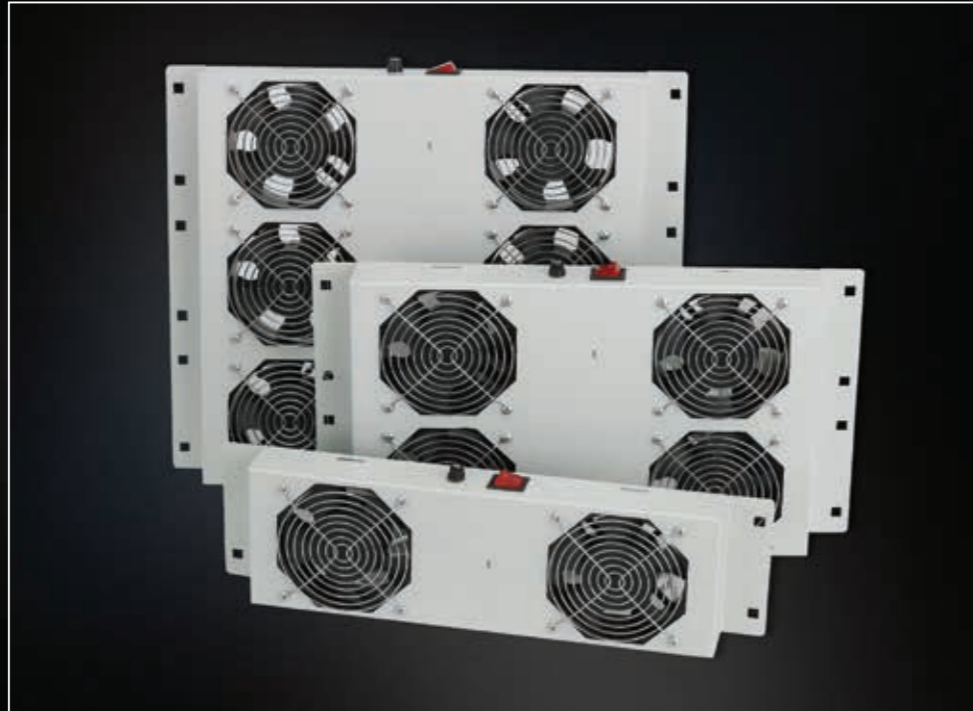
The thermostat levels of multiple thermostatic fan modules installed within the cabinet might be adjusted for gradual ventilation. Thanks to such adjustment, the fan modules might engage **when the temperature rises** and might disengage when the temperature is at desired levels.

EASY INTERVENTION

It is possible to intervene to the fan modules installed at top, bottom and sides of the cabinet with ease **without disturbing the system already installed** in the cabinet for installation, maintenance and repairs.

WIDE VARIETY OF FAN MODULE OPTIONS

19" fan modules are capable of responding to all ventilation requirements thanks to the rich variety of fan options; fans with no thermostats, fans with analogue thermostat and fans with digital thermostat, offered in configurations in the range of 1 fan up to 12 fans.



Maximum active ventilation is possible at all depths by installing maximum 6 fan modules at top, side and bottom sections of the D=600 cabinets, maximum 8 fan modules at top, side and bottom sections of the D=800 cabinets and maximum 12 fan modules at top, side and bottom sections of the D=1000 cabinets.





Cable organizer is used for arranging the mass data cables and power cords installed within W = 800 cabinets, for ensuring effective installation of the same within the cabinet and conceal the tangled appearance that might be formed by mass cabling.

Thanks to the frequent cable holes available at the side and rear sections, the organizer enables cable entry and outlets at all heights of the cabinet.

The cables are easily accessible thanks to the removable front door fitted with flap lock and the cabinet conceals the cables and provides a uniform appearance when the door is closed.

The organizer might be requested at the time of the order, but it is also possible to order the organizer later and integrate the same to the cabinet with ease.

If required, 2 organizers might be installed at front and rear sides of the cabinet, thus enable management of the intensive cabling both from front and rear and provide a professional appearance.



GT SERIES HYBRID COLOR OPTIONS

Authentic and particular profile structure is suitable for different color combinations.



Black & White color combination is the standard combination; it is applicable for orders of **all kinds and quantities**.

RICH COLOR OPTIONS

If specified at the time of order, color combinations fitting all environments are applicable.



Please contact with our sales department for other **custom color combinations**.



DECORATIVE AND AESTHETIC APPEARANCE

With its extremely aesthetic appearance and robust structure, the aluminum corner piece not only provides an aesthetic appearance to the cabinet, but also ensures maximum durability.



ROBUST STRUCTURE

The durability of the cabinet is maximized as twisted horizontal and vertical profiles are inserted into the custom design aluminum corner piece with socket type click-fit system and fixed using steel screws.

THERMOMETER

You can check inside heat of cabinet directly

MODULAR SYSTEM

Fully modular cabinet is shipped as assembled single piece.

ADJACENT INSTALLATION

The cabinets can be installed adjacently.

AVAILABILITY

Network and server cabinets are suitable for office, system room, datacenter and cabling system installations. The cabinets are compatible with network and server devices in all brands and models.

MULTI-DIRECTIONAL ACCESS

The cabinets can be accessed from multiple directions during installation, maintenance and repair thanks to the detachable side, rear doors and roof.

SPACIOUS INTERNAL VOLUME

The cabinets have spacious volume capable of responding to the cabling needs of all instruments and equipment to be installed within the cabinet.



OPTIMUM DEMAND = OPTIMUM COST

Addition and removal of all features in accordance with requirements enable achievement of optimum structure and optimum cost, eliminating the stereotyped product and price requirements.

SAFE STRUCTURE

All doors providing access to the cabinet from all four directions are provided with locks.

All door locks can be opened using a single key. Separate keys are not required for each lock.

RICH ACCESSORY VARIETIES

Rich and practical accessory family is available for the product capable of meeting all requirements.



INTERCHANGEABLE DOOR SYSTEM

Thanks to the custom design profile and frame system, all front, rear and side panels with **identical width** are easily interchangeable.

FLEXIBLE COMPONENT STRUCTURE

All kinds of options might be formed according to the requirements and to the satisfaction of the customer if specified at the time of order.

HIGH QUALITY MANUFACTURE

Offers cost-effective and competitive solutions thanks to state-of-the-art manufacture conforming to high quality standards.

SWIFT DEADLINE

The customer satisfaction is maintained at the highest level by responding to all kinds of requirements as swift as possible.



DIFFERENT REQUIREMENTS = DIFFERENT OPTIONS

Some of the options available for various configurations include 2 optional bottom plates, 2 distinct roof options and rich variety of door options. Please look at the following pages of the catalogue for further options or visit our website at www.mirsanrack.com for further information.

CONFIGURATION OPTIONS REGARDLESS OF QUANTITY

It is not obligatory to place orders in high quantities for procuring cabinets in the desired configuration.

Any desired configuration is applicable to any order in any quantity.



U BRANDING

U branding can be applied to the equipment mounting rails, which are provided as 1 set: 4 units within the cabinet as standard practice, by automatic serigraphy.

U branding applied to the equipment mounting rails not only facilitate installation, but also assists indexation of the instruments installed within the cabinet.

ADJUSTABLE DEPTH

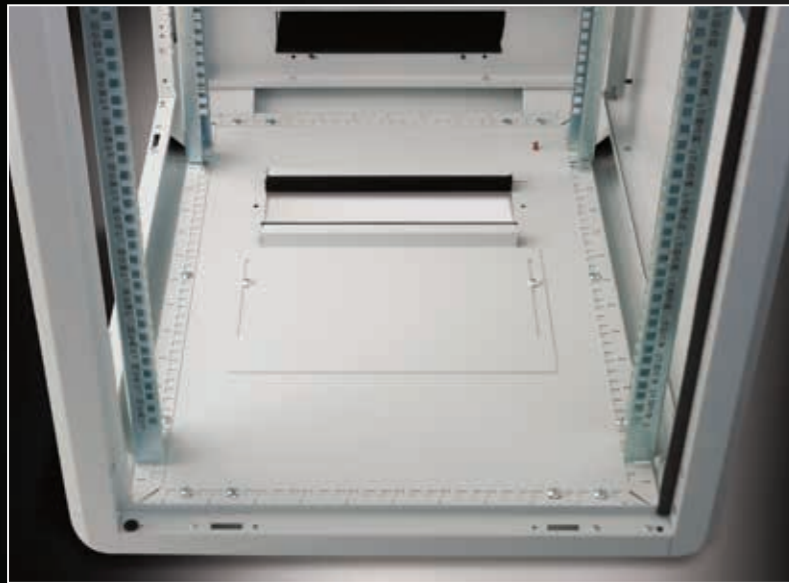
All equipment mounting rails can be moved along the depth of the cabinet and easily fixed at the desired depth.

Thus, the equipment mounting rail distances can be adjusted depending of the depth of the instrument to be installed within the cabinet, enabling effective use of the inner cabinet space.

MULTI-DIRECTIONAL CABLE ENTRIS

Multiple cable entry holes enable cable entry from multiple directions, thus facilitate installation and use.

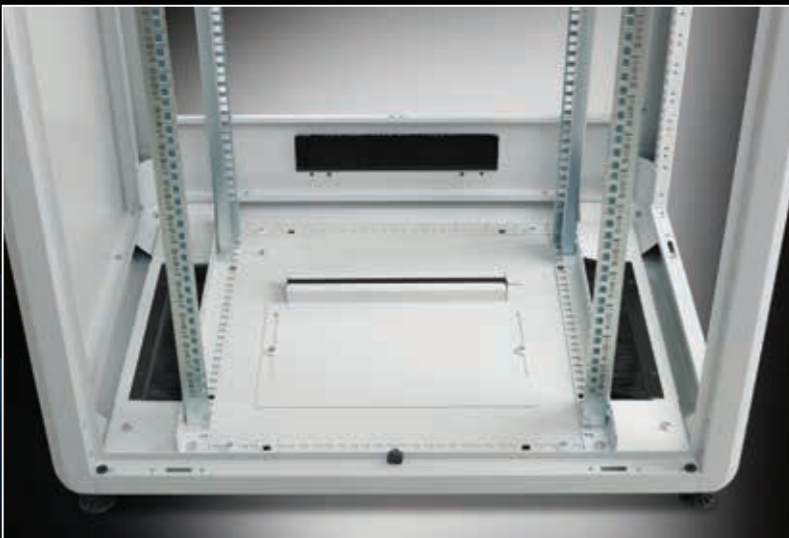
W=600 CABINET BOTTOM CABLE ENTRIS



The bottom plate model for W = 600 standard cabinets is the non-perforated bottom plate model fitted with sliding cable entry hole.

Thanks to the rubber-edged cable entry hole module with W=350mm x D=250mm dimensions and 150mm maximum sliding distance, the cables entering the cabinet can be crimped without any damages, can be installed underneath the cabinet and protected against undesirable substances and dust.

W=800 CABINET BOTTOM CABLE ENTRIES

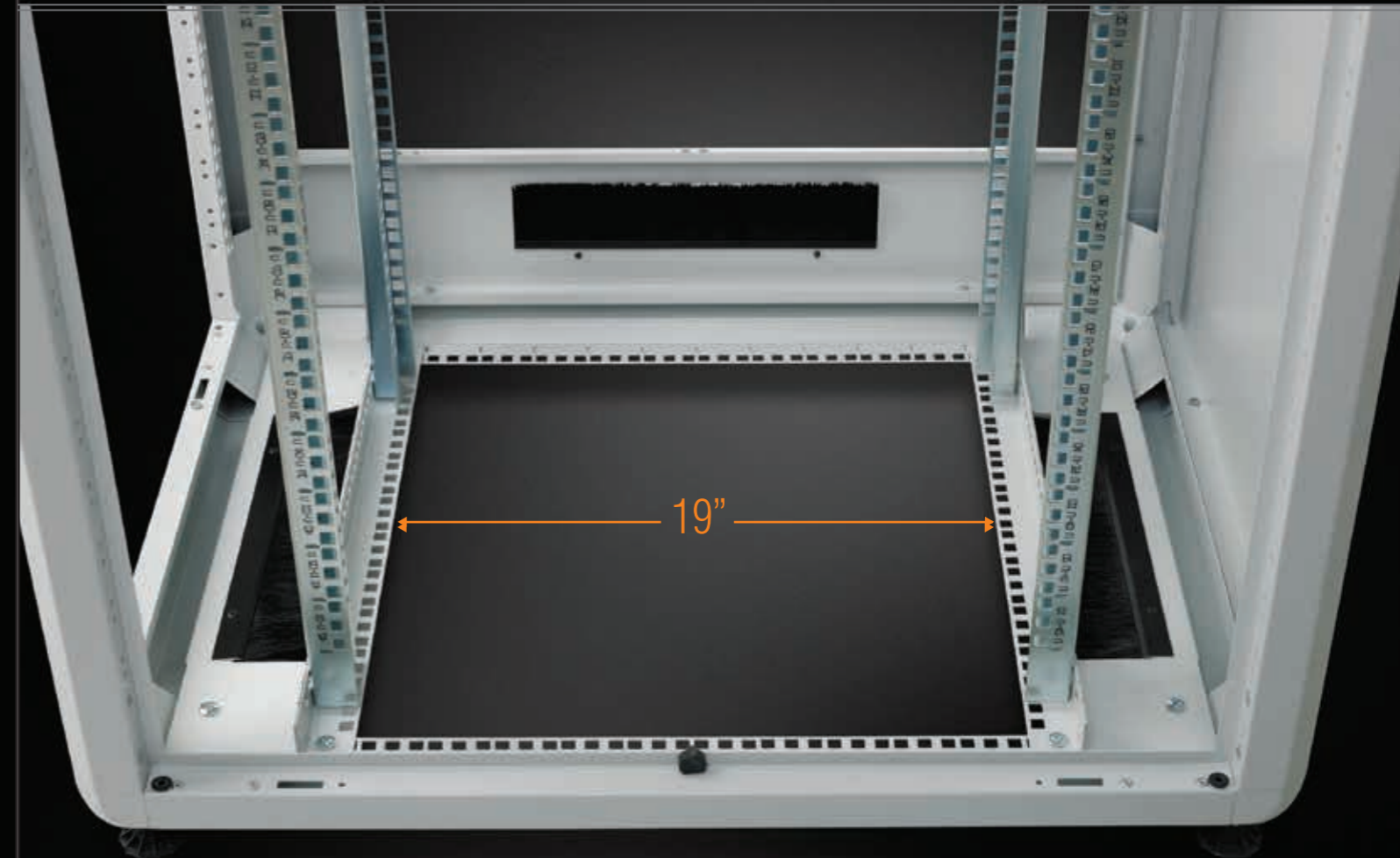


The bottom plate model for W = 800 standard cabinets is the non-perforated bottom plate model fitted with sliding cable conduit hole.

One brushed cable entry hole is available on both right and left side at the bottom of the cabinet.

Brushed and rubber-edged cable entry holes enable installation of cables 3 different points at the cabinet bottom.

DETACHABLE BOTTOM PLATE



If not required, or in case of very intensive cable harness entry from the bottom, the bottom plate might be removed from cabinet configuration.

The bottom plate can be detached and assembled easily during installation without disturbing the installed system.

Even if no bottom plate is used, the brushed cable conduit holes at the right and left side of the bottom are available as standard outfit at W = 800 cabinets.

STANDARDS AND COMPLIANCES

- ISO9001:2008 Quality Management System
- IEC 297-1, 19" mounting standard
- IEC 297-2, Overall cabinet dimensions
- TS EN 61587-1 Standard.
- Environment Friendly
- %100 recyclable.



WIDE PRODUCT RANGE

The Versatile cabinets are available in three different depth options, D = 600, 800 and 1000; 2 different width options, W = 600 and 800; and 60 different size options in total with 10 different length options ranging from 12U to 46U for all such sizes.

Offers solutions with optimum height and weight for all kinds of installation requirements thanks to the product range offering overall 60 different size options.



W=600 FRONT DOOR MODEL

The standard front door model for W = 600 Versatile cabinets is the full length door model with **aluminum extruded frame**.

Front glass door is 4mm thick, smoke colored, antistatic, tempered full length glass with high resistance against shattering with single point locking handled lock.

Custom design aluminum extruded glass frame not only provides robustness, but also adds aesthetic and decorative appearance to the cabinet.

The lock mechanism is **handled lock** type mechanism.

The colored PVC stripe installed on the aluminum glass frame complements the appearance.

Fitted with **spring Loaded hinge system**, the glass front door enables ease of installation and use as the opening direction can be modified easily, and the door can be removed and reinstalled without use of any tool, when desired.



W=800 FRONT DOOR MODEL

The standard front door model for W = 800 Versatile cabinets is the vertically split full length **double glass door** model with aluminum extruded frame.

Front glass door is 4mm thick, smoke colored, antistatic, tempered full length glass with high resistance against shattering with handled lock.

Custom design aluminum extruded glass frame not only provides robustness, but also adds aesthetic and decorative appearance to the cabinet.

The lock mechanism is **barrel lock** type mechanism.

Ensures safe use with double-point locking structure As it can be locked from top and bottom with 2 barrel locks.

Screw-coupled aluminum extruded interlocking glazing strips are installed at the junction of the left and right glass doors at the center, which enable full engagement of both wings with no spacing in-between.

The colored PVC stripe installed on the aluminum glass frame complements the appearance.

Fitted with spring Loaded hinge system, the glass front door enables ease of installation and use as the opening direction can be modified easily, and the door can be removed and reinstalled without use of any tool, when desired.



SIDE AND REAR DOOR MODEL

The standard front side and rear door model for the Versatile cabinets is the removable **horizontally split double door** model.

Horizontally split double door model enables easy removal and transportation of the side and rear doors during installation and maintenance & repairs.

Easily removable side and rear doors are fitted with single **barrel locking** mechanism.

By virtue of the **snap locking** system installed on the side and rear doors, the doors can remain closed on the cabinet without being locked.

Thanks to the custom design at the horizontally split double doors; the lower door cannot be removed without removing the upper door first. With such arrangement, **when the upper door is locked, the lower door is also locked.**

In case any fan module will be installed at side panels, 63% perforated type options are available for horizontally split double side panels.

The side and rear doors fitted with hinged system might be preferred among the great variety of door options available.



REAR CABLE INLETS

Brushed cable entry holes with 60mmX300mm dimensions are available on the **top and bottom** of the rear door for 22U and higher standard Versatile Cabinets



ROOF MODEL

Standard roof model for Versatile cabinets is the **pagoda** model.

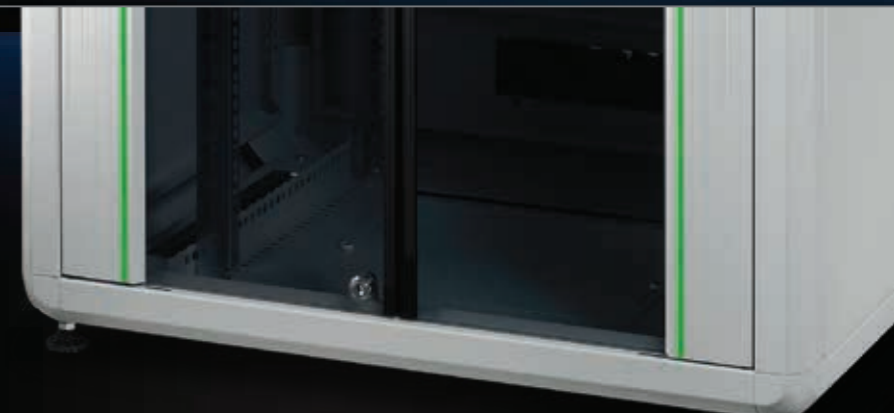
As Pagoda type roof is installed **10mm above** the cabinet, the roof ensures active ventilation when the fan module is installed and passive ventilation when no fan module is installed, and further provides protection against dipping water and dust.

The decorative PVC retainer parts installed at the corners of the roof complete decorative coherence of the cabinet and the roof.



GROUND CONTACT

The ground contact of the cabinet in all standard Versatile cabinet configurations are ensured by means of 4 leveling feet with adjustable **height installed** at the bottom corners of the cabinet. Caster group, 2 with brakes and 2 without brakes, are available as an option.



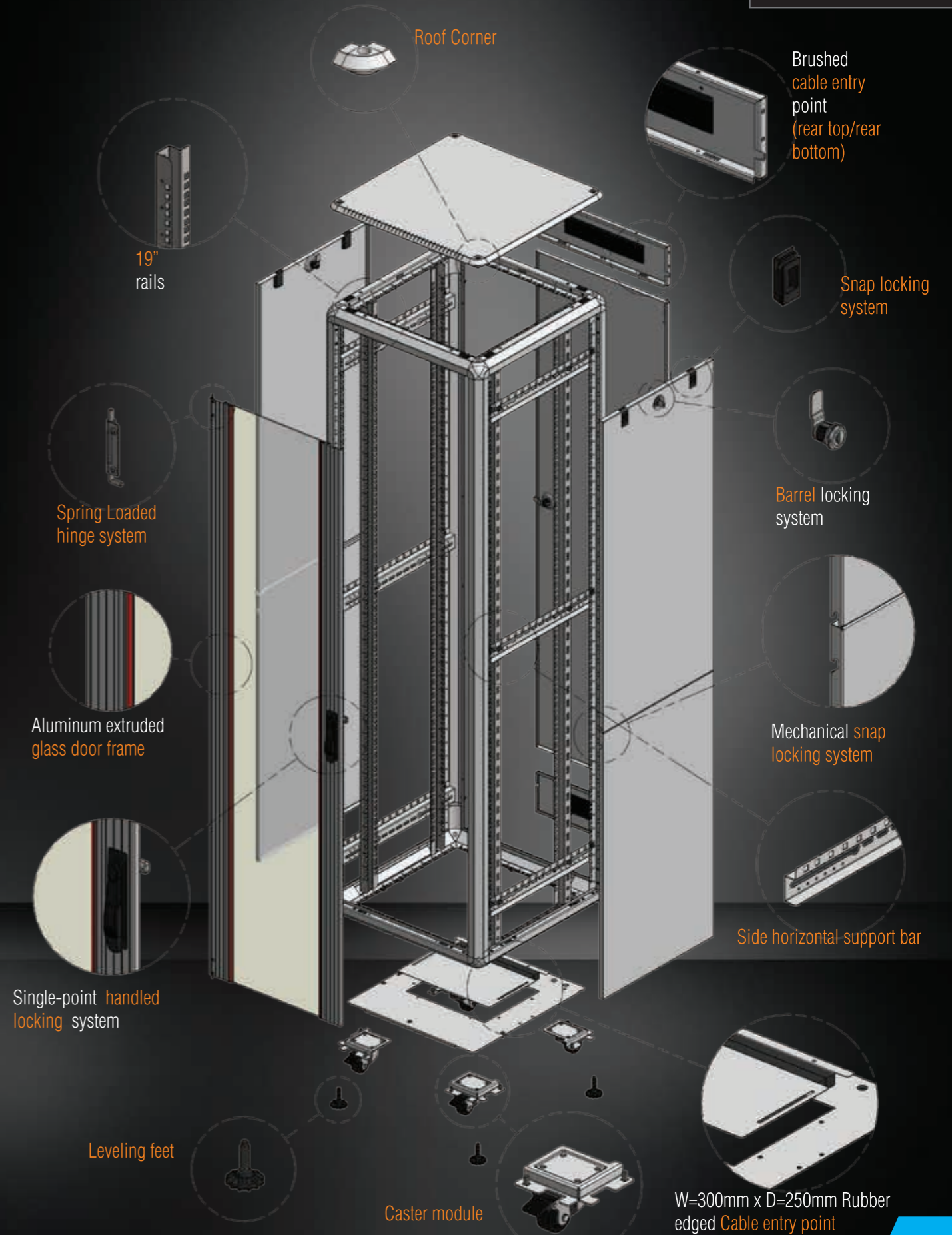
GT V 600 x 600 FREE STANDING CABINET



WIDTH **W: 600mm**
DEPTH **D: 600mm**

EXPLODED VIEW

WIDTH **W: 600mm**
DEPTH **D: 600mm**



LOADING CAPACITY : **1500kg**

COLOR OPTIONS



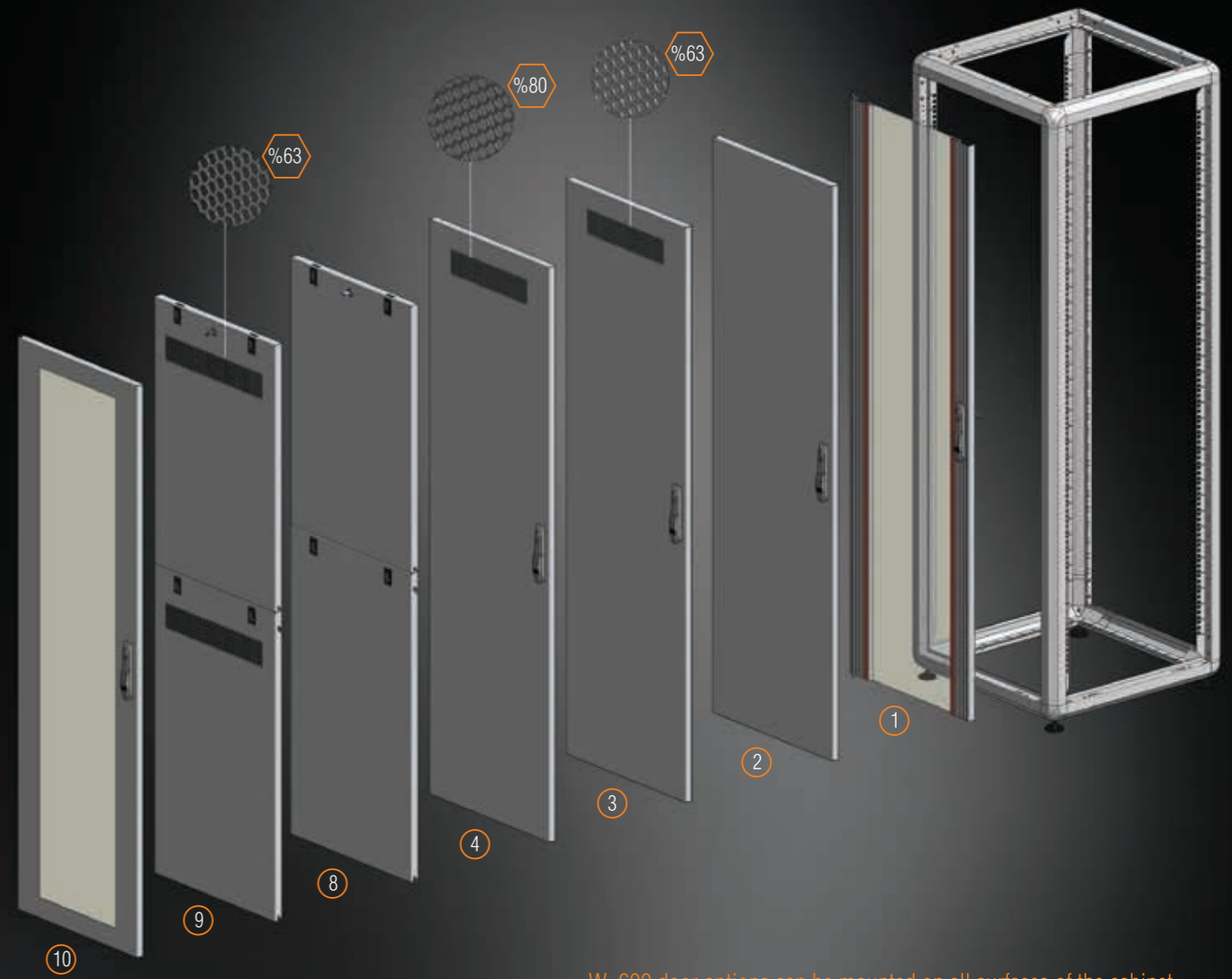
CONSTRUCTION DRAWINGS

WIDTH **W: 600mm**
DEPTH **D: 600mm**



W=600 DOOR OPTIONS

WIDTH **W: 600mm**
DEPTH **D: 600mm**



W=600 door options can be mounted on all surfaces of the cabinet.

GT SERIES VERSATILE FREE STANDING CABINET W=600mm D=600mm

Product Code	Product Description	U Measurement (U)	Product Dimensions WxDxH (mm)	Width Between Rails	Depth Between Rails (mm)	U Measurement (mm)	Package Dimensions WxDxH (mm)	Number in the Package (pcs)	Product Net Weight (kg)	Product Gross Weight (kg)	Number on Pallet (pcs)	Pallet Dimensions WxDxH (mm)	Pallet Weight (kg)	Height with Leveling Feet (mm)	Height with Caster Group (mm)
MIR.GTV12U66.XX	12U W=600mm D=600mm VERSATILE	12U	600x600x719	19"	390	594	670x670x849	1	30,6	37,8	2	670x670x1698	75	749	779
MIR.GTV16U66.XX	16U W=600mm D=600mm VERSATILE	16U	600x600x897	19"	390	772	670x670x1037	1	36,9	44,5	2	670x670x2074	89	927	957
MIR.GTV20U66.XX	20U W=600mm D=600mm VERSATILE	20U	600x600x1075	19"	390	950	670x670x1215	1	43,2	51,2	2	670x670x2430	102	1105	1135
MIR.GTV22U66.XX	22U W=600mm D=600mm VERSATILE	22U	600x600x1164	19"	390	1039	670x670x1305	1	46,4	54,6	2	670x670x2610	109	1194	1224
MIR.GTV26U66.XX	26U W=600mm D=600mm VERSATILE	26U	600x600x1342	19"	390	1217	670x670x1482	1	52,7	61,3	1	670x670x1482	61,3	1372	1402
MIR.GTV32U66.XX	32U W=600mm D=600mm VERSATILE	32U	600x600x1608	19"	390	1483	670x670x1748	1	62,2	71,3	1	670x670x1748	71,3	1638	1668
MIR.GTV36U66.XX	36U W=600mm D=600mm VERSATILE	36U	600x600x1786	19"	390	1661	670x670x1926	1	68,5	77,7	1	670x670x1926	77,7	1816	1846
MIR.GTV40U66.XX	40U W=600mm D=600mm VERSATILE	40U	600x600x1964	19"	390	1839	670x670x2104	1	74,8	84,9	1	670x670x2104	84,9	1994	2024
MIR.GTV42U66.XX	42U W=600mm D=600mm VERSATILE	42U	600x600x2053	19"	390	1928	670x670x2193	1	78	88,2	1	670x670x2193	88,2	2083	2113
MIR.GTV46U66.XX	46U W=600mm D=600mm VERSATILE	46U	600x600x2231	19"	390	2106	670x670x2371	1	84,3	94,8	1	670x670x2371	94,8	2261	2291

XX=Color Code, 02 means Light Grey RAL 7035 and 01 means Black RAL 9005, the code is added by the customer at the order.

The door width to be selected should be selected among the door options with the related surface dimensions. When one of the door options is selected, it should be informed at the order with its selected surface.

The number 0 from the door options stands for "doorless". The standard door options: Front Door=1, Side Door=8, Rear Door=8.

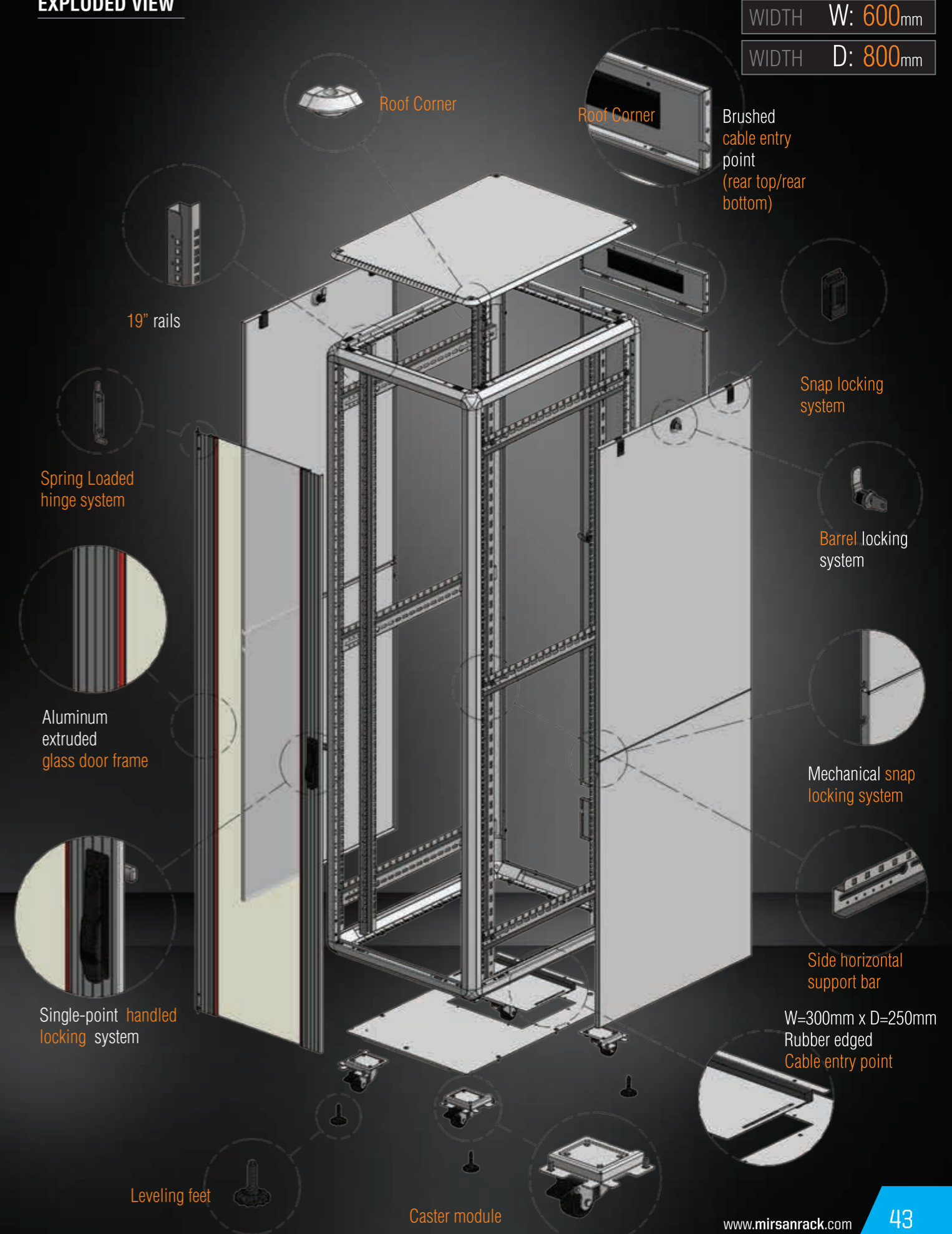
GT V 600 x 800 FREE STANDING CABINET



WIDTH W: 600mm

WIDTH D: 800mm

EXPLODED VIEW

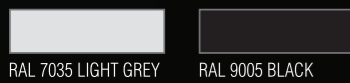


WIDTH W: 600mm

WIDTH D: 800mm

LOADING CAPACITY : 1500kg

COLOR OPTIONS



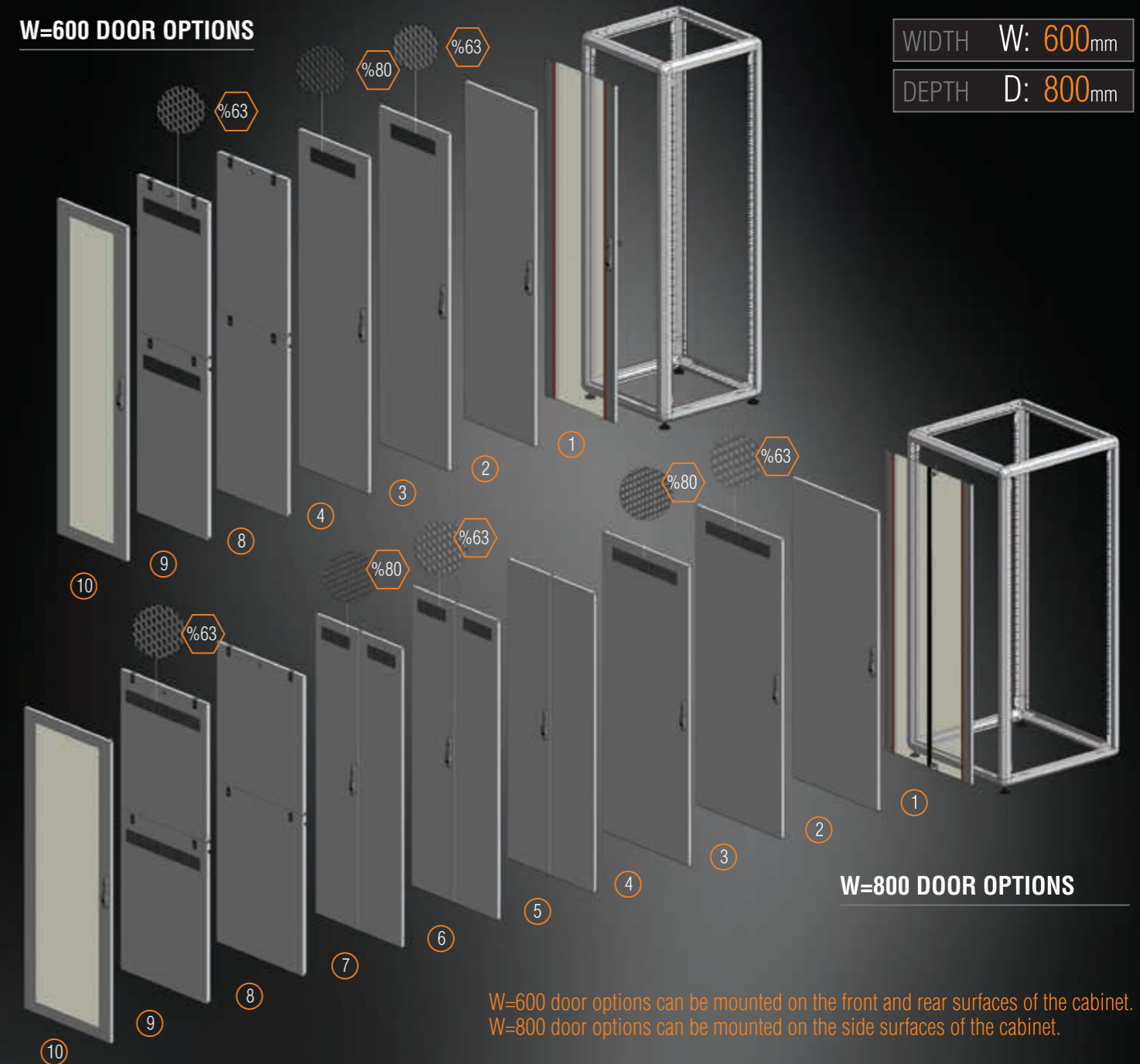
GT V 600 x 800 FREE STANDING CABINET

CONSTRUCTION DRAWINGS

WIDTH **W: 600mm**
 DEPTH **D: 800mm**



W=600 DOOR OPTIONS



WIDTH **W: 600mm**
 DEPTH **D: 800mm**

W=800 DOOR OPTIONS

W=600 door options can be mounted on the front and rear surfaces of the cabinet.
 W=800 door options can be mounted on the side surfaces of the cabinet.

GT SERIES VERSATILE FREE STANDING CABINET W=600mm D=800mm

Product Code	Product Description	U Measurement (U)	Product Dimensions WxDxH (mm)	Width: Between Rails (mm)	Depth: Between Rails (mm)	h Measurement (mm)	Package Dimensions WxDxH (mm)	Number in the Package (pcs)	Product Net Weight (kg)	Product Gross Weight (kg)	Number on Pallet (pcs)	Pallet Dimensions WxDxH (mm)	Pallet Weight (kg)	Height with Leveling Feet (mm)	Height with Caster Group (mm)
MR.GTV12U68.XX	12U W=600mm D=800mm VERSATILE	12U	600x800x719	19"	555	594	670x880x849	1	35	40,5	2	670x880x1698	81	749	779
MR.GTV16U68.XX	16U W=600mm D=800mm VERSATILE	16U	600x800x897	19"	555	772	670x880x1037	1	42,5	49	2	670x880x2074	98	927	957
MR.GTV20U68.XX	20U W=600mm D=800mm VERSATILE	20U	600x800x1075	19"	555	950	670x880x1215	1	50	57,3	2	670x880x2430	114	1105	1135
MR.GTV22U68.XX	22U W=600mm D=800mm VERSATILE	22U	600x800x1164	19"	555	1039	670x880x1305	1	53,4	61,4	2	670x880x2610	123	1194	1224
MR.GTV26U68.XX	26U W=600mm D=800mm VERSATILE	26U	600x800x1342	19"	555	1217	670x880x1482	1	60,7	70	1	670x880x1482	70	1372	1402
MR.GTV32U68.XX	32U W=600mm D=800mm VERSATILE	32U	600x800x1608	19"	555	1483	670x880x1748	1	71,6	81	1	670x880x1748	81	1638	1668
MR.GTV36U68.XX	36U W=600mm D=800mm VERSATILE	36U	600x800x1786	19"	555	1661	670x880x1926	1	79	89	1	670x880x1926	89	1816	1846
MR.GTV40U68.XX	40U W=600mm D=800mm VERSATILE	40U	600x800x1964	19"	555	1839	670x880x2104	1	86	97,4	1	670x880x2104	97,4	1994	2024
MR.GTV42U68.XX	42U W=600mm D=800mm VERSATILE	42U	600x800x2053	19"	555	1928	670x880x2193	1	90	101,5	1	670x880x2193	101,5	2083	2113
MR.GTV46U68.XX	46U W=600mm D=800mm VERSATILE	46U	600x800x2231	19"	555	2106	670x880x2371	1	97	109,7	1	670x880x2371	109,7	2261	2291

XX=Color Code, 02 means Light Grey RAL 7035 and 01 means Black RAL 9005, the code is added by the customer at the order.

The door width to be selected should be selected among the door options with the related surface dimensions. When one of the door options is selected, it should be informed at the order with its selected surface.

The number 0 from the door options stands for "doorless". The standard door options: Front Door=1, Side Door=8, Rear Door=8.

GT V 600 x 1000 FREE STANDING CABINET



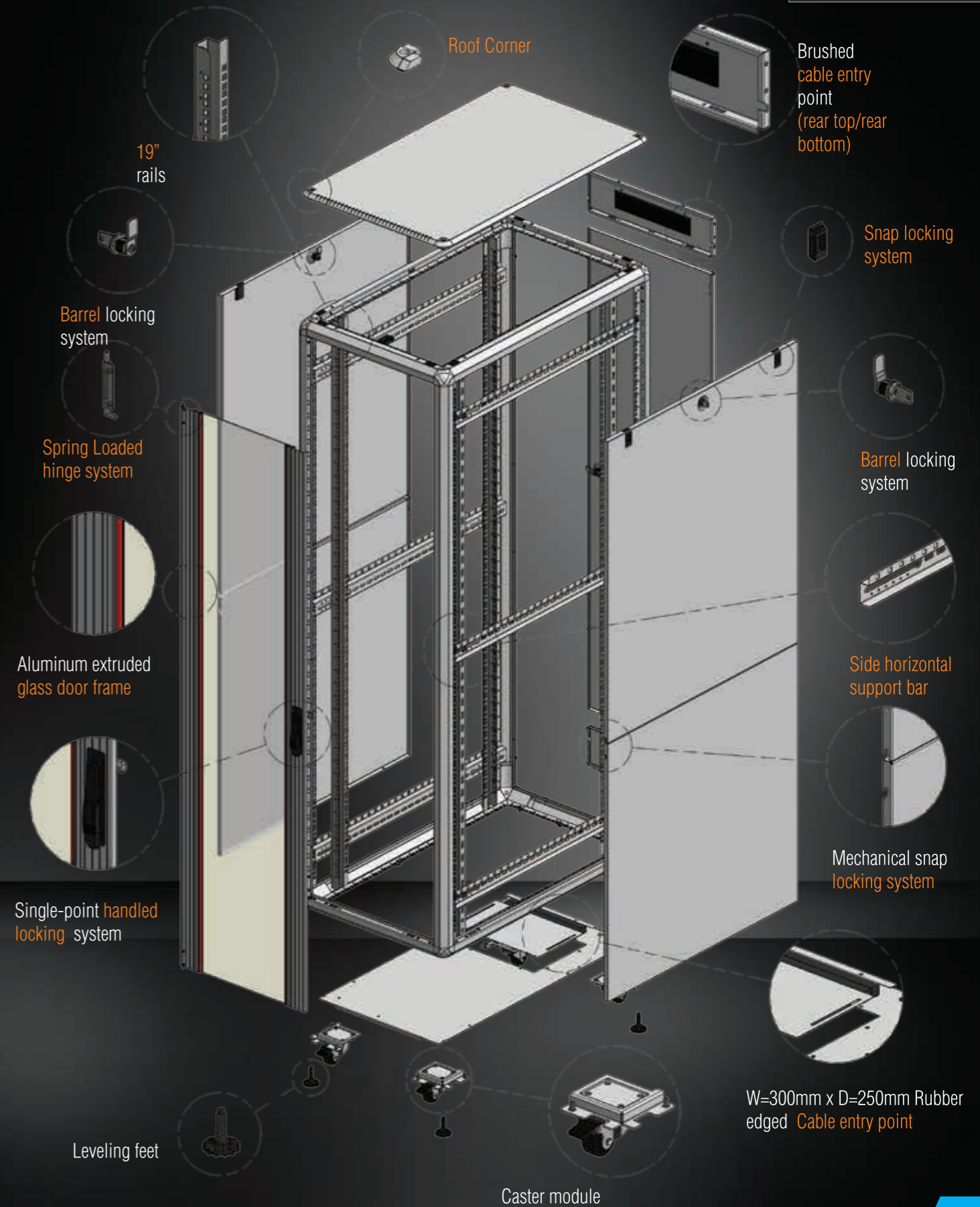
WIDTH W: 600mm

DEPTH D: 1000mm

EXPLODED VIEW

WIDTH W: 600mm

DEPTH D: 1000mm



COLOR OPTIONS



LOADING CAPACITY : 1500kg

GT V 600 x 1000 FREE STANDING CABINET

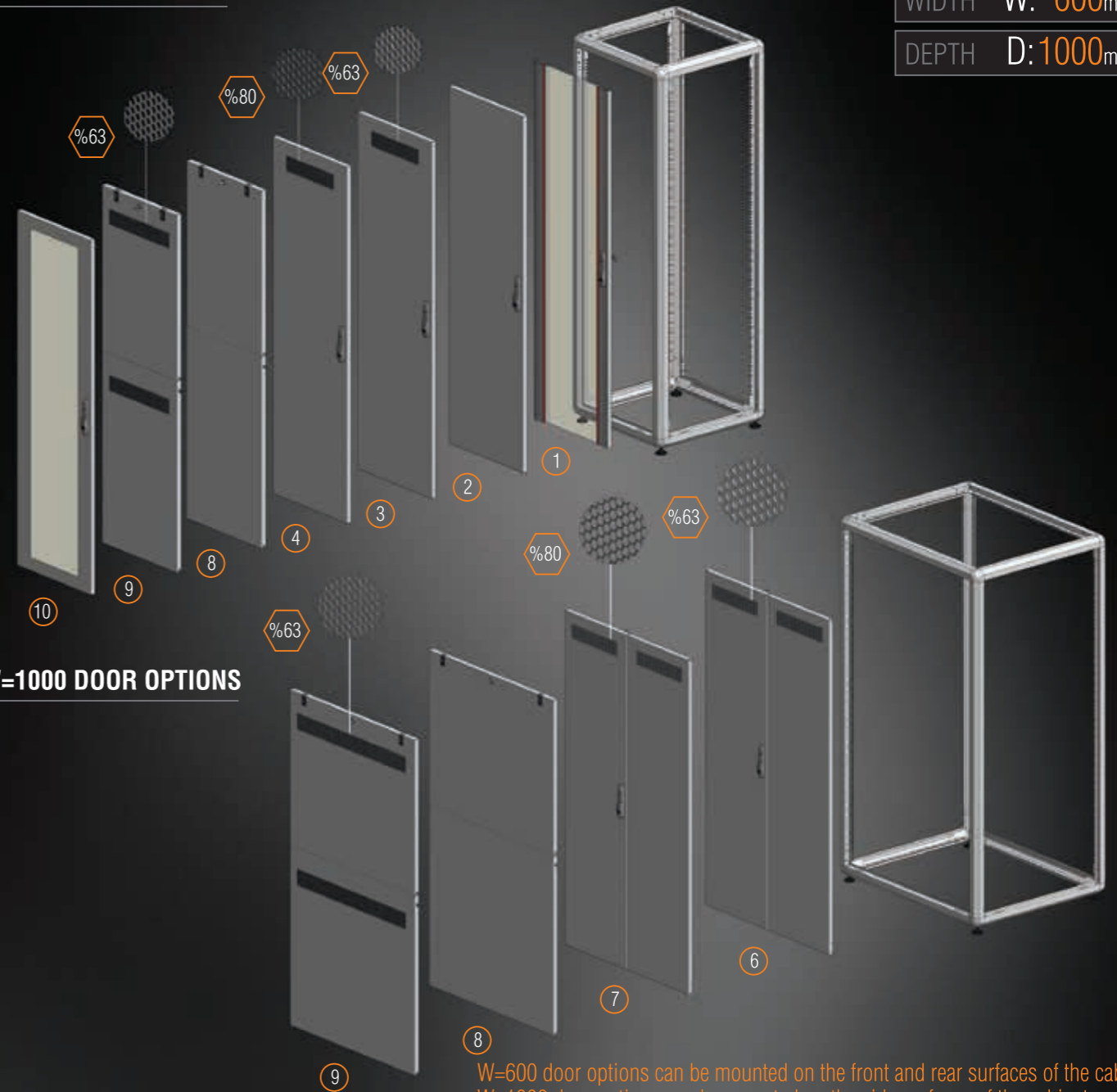
CONSTRUCTION DRAWINGS

WIDTH W: 600mm
DEPTH D: 1000mm



W=600 DOOR OPTIONS

WIDTH W: 600mm
DEPTH D: 1000mm



W=1000 DOOR OPTIONS

W=600 door options can be mounted on the front and rear surfaces of the cabinet.
W=1000 door options can be mounted on the side surfaces of the cabinet.

GT SERIES VERSATILE FREE STANDING CABINET W=600mm D=1000mm

Product Code	Product Description	U Measurement (U)	Product Dimensions WxDxH (mm)	Width: Between Rails (mm)	Depth: Between Rails (mm)	U Measurement (mm)	Package Dimensions WxDxH (mm)	Number in the Package (pcs)	Product Net Weight (kg)	Product Gross Weight (kg)	Number on Pallet (pcs)	Pallet Dimensions WxDxH (mm)	Pallet Weight (kg)	Height with Leveling Feet (mm)	Height with Caster Group (mm)
MR.GTV12U61.XX	12U W=600mm D=1000mm VERSATILE	12U	600x1000x719	19"	740	594	670x1080x849	1	38,2	40	2	670x1080x1698	80	749	779
MR.GTV16U61.XX	16U W=600mm D=1000mm VERSATILE	16U	600x1000x897	19"	740	772	670x1080x1037	1	46	48,3	2	670x1080x2074	96	927	957
MR.GTV20U61.XX	20U W=600mm D=1000mm VERSATILE	20U	600x1000x1075	19"	740	950	670x1080x1215	1	54	56,7	2	670x1080x2430	113	1105	1135
MR.GTV22U61.XX	22U W=600mm D=1000mm VERSATILE	22U	600x1000x1164	19"	740	1039	670x1080x1305	1	58	60,8	2	670x1080x2610	121	1194	1224
MR.GTV26U61.XX	26U W=600mm D=1000mm VERSATILE	26U	600x1000x1342	19"	740	1217	670x1080x1482	1	65,8	69	1	670x1080x1482	69	1372	1402
MR.GTV32U61.XX	32U W=600mm D=1000mm VERSATILE	32U	600x1000x1608	19"	740	1483	670x1080x1748	1	77,5	81,5	1	670x1080x1748	81,5	1638	1668
MR.GTV36U61.XX	36U W=600mm D=1000mm VERSATILE	36U	600x1000x1786	19"	740	1661	670x1080x1926	1	85,5	89,8	1	670x1080x1926	89,8	1816	1846
MR.GTV40U61.XX	40U W=600mm D=1000mm VERSATILE	40U	600x1000x1964	19"	740	1839	670x1080x2104	1	93,4	98	1	670x1080x2104	98	1994	2024
MR.GTV42U61.XX	42U W=600mm D=1000mm VERSATILE	42U	600x1000x2053	19"	740	1928	670x1080x2193	1	97,3	102	1	670x1080x2193	102	2083	2113
MR.GTV46U61.XX	46U W=600mm D=1000mm VERSATILE	46U	600x1000x2231	19"	740	2106	670x1080x2371	1	105	110,5	1	670x1080x2371	110,5	2261	2291

XX=Color Code, 02 means Light Grey RAL 7035 and 01 means Black RAL 9005, the code is added by the customer at the order.

The door width to be selected should be selected among the door options with the related surface dimensions.
When one of the door options is selected, it should be informed at the order with its selected surface.

The number 0 from the door options stands for "doorless".
The standard door options:
Front Door=1, Side Door=8, Rear Door=8.

GT V 800 x 600 FREE STANDING CABINET

WIDTH **W: 800mm**

DEPTH **D: 600mm**



COLOR OPTIONS



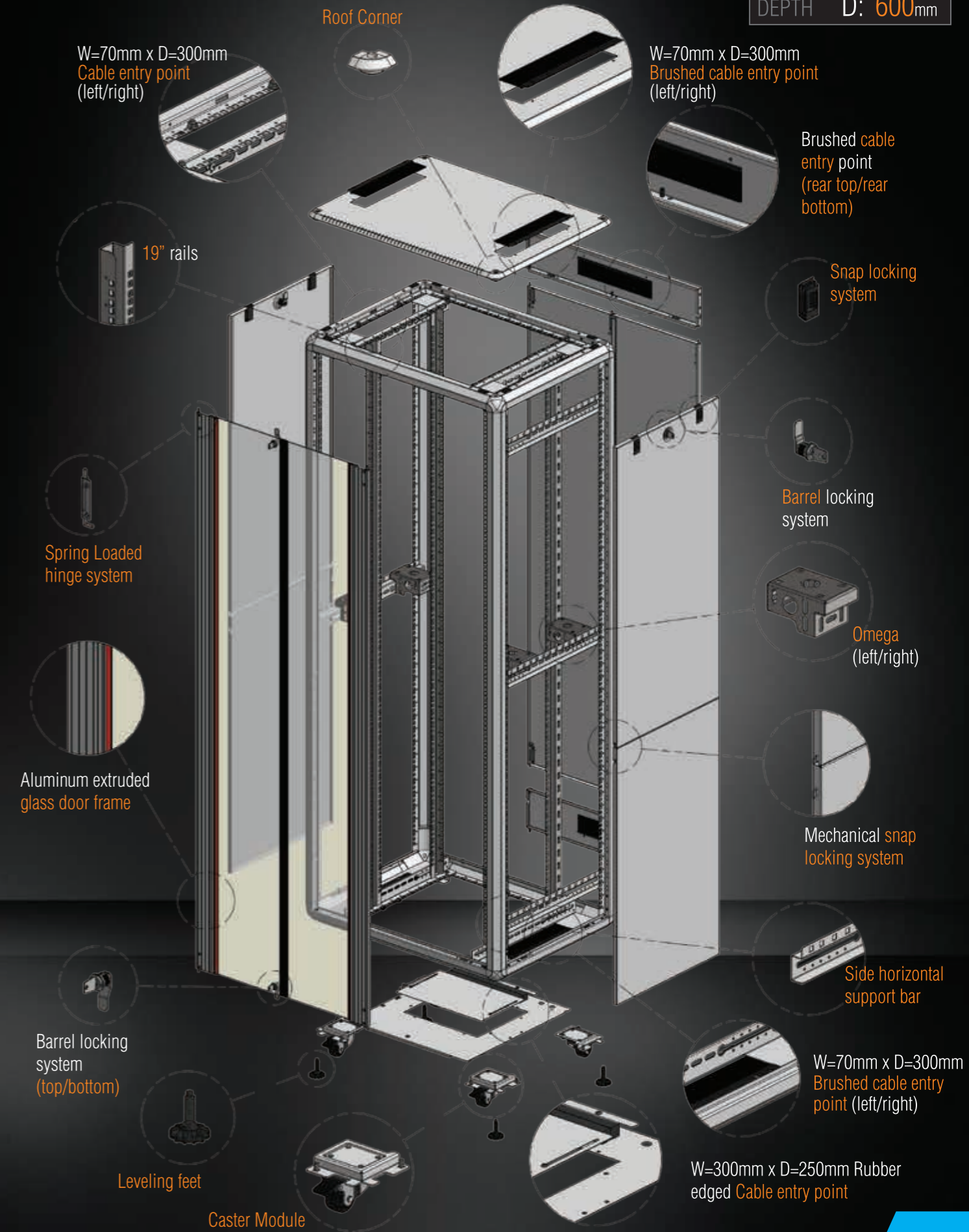
RAL 7035 LIGHT GREY RAL 9005 BLACK

LOADING CAPACITY : **1500kg**

EXPLODED VIEW

WIDTH **W: 800mm**

DEPTH **D: 600mm**



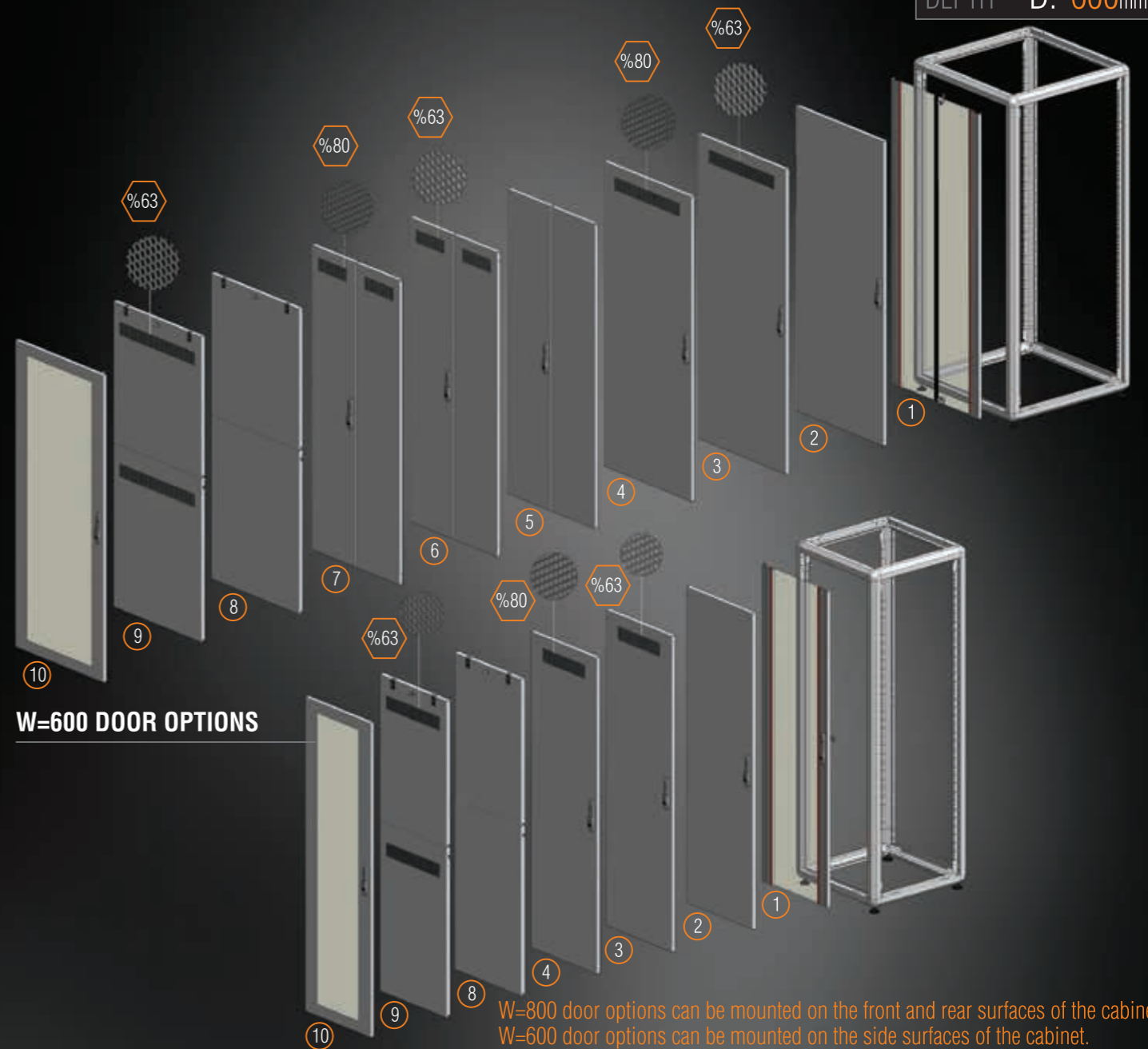
CONSTRUCTION DRAWINGS

WIDTH **W: 800mm**
DEPTH **D: 600mm**



W=800 DOOR OPTIONS

WIDTH **W: 800mm**
DEPTH **D: 600mm**



W=600 DOOR OPTIONS

W=800 door options can be mounted on the front and rear surfaces of the cabinet.
W=600 door options can be mounted on the side surfaces of the cabinet.

GT SERIES VERSATILE FREE STANDING CABINET W=800mm D=600mm

Product Code	Product Description	U Measurement (U)	Product Dimensions WxDxH (mm)	Width: Between Rails (mm)	Depth: Between Rails (mm)	U Measurement (mm)	Package Dimensions WxDxH (mm)	Number in the Package (pcs)	Product Net Weight (kg)	Product Gross Weight (kg)	Number on Pallet (pcs)	Pallet Dimensions WxDxH (mm)	Pallet Weight (kg)	Height with Leveling Feet (mm)	Height with Caster Group (mm)
MIR.GTV12U86.XX	12U W=800mm D=600mm VERSATILE	12U	800x600x719	19"	390	594	880x670x849	1	34,5	39,7	2	880x670x1698	79	749	779
MIR.GTV16U86.XX	16U W=800mm D=600mm VERSATILE	16U	800x600x897	19"	390	772	880x670x1037	1	41,6	48	2	880x670x2074	96	927	957
MIR.GTV20U86.XX	20U W=800mm D=600mm VERSATILE	20U	800x600x1075	19"	390	950	880x670x1215	1	48,8	56	2	880x670x2430	112	1105	1135
MIR.GTV22U86.XX	22U W=800mm D=600mm VERSATILE	22U	800x600x1164	19"	390	1039	880x670x1305	1	52,3	60	2	880x670x2610	120	1194	1224
MIR.GTV26U86.XX	26U W=800mm D=600mm VERSATILE	26U	800x600x1342	19"	390	1217	880x670x1482	1	59,4	68,3	1	880x670x1482	68,3	1372	1402
MIR.GTV32U86.XX	32U W=800mm D=600mm VERSATILE	32U	800x600x1608	19"	390	1483	880x670x1748	1	70	79	1	880x670x1748	79	1638	1668
MIR.GTV36U86.XX	36U W=800mm D=600mm VERSATILE	36U	800x600x1786	19"	390	1661	880x670x1926	1	77	87,3	1	880x670x1926	87,3	1816	1846
MIR.GTV40U86.XX	40U W=800mm D=600mm VERSATILE	40U	800x600x1964	19"	390	1839	880x670x2104	1	84,4	95,3	1	880x670x2104	95,3	1994	2024
MIR.GTV42U86.XX	42U W=800mm D=600mm VERSATILE	42U	800x600x2053	19"	390	1928	880x670x2193	1	88	99,3	1	880x670x2193	99,3	2083	2113
MIR.GTV46U86.XX	46U W=800mm D=600mm VERSATILE	46U	800x600x2231	19"	390	2106	880x670x2371	1	95	107,4	1	880x670x2371	107,4	2261	2291

XX=Color Code, 02 means Light Grey RAL 7035 and 01 means Black RAL 9005, the code is added by the customer at the order.

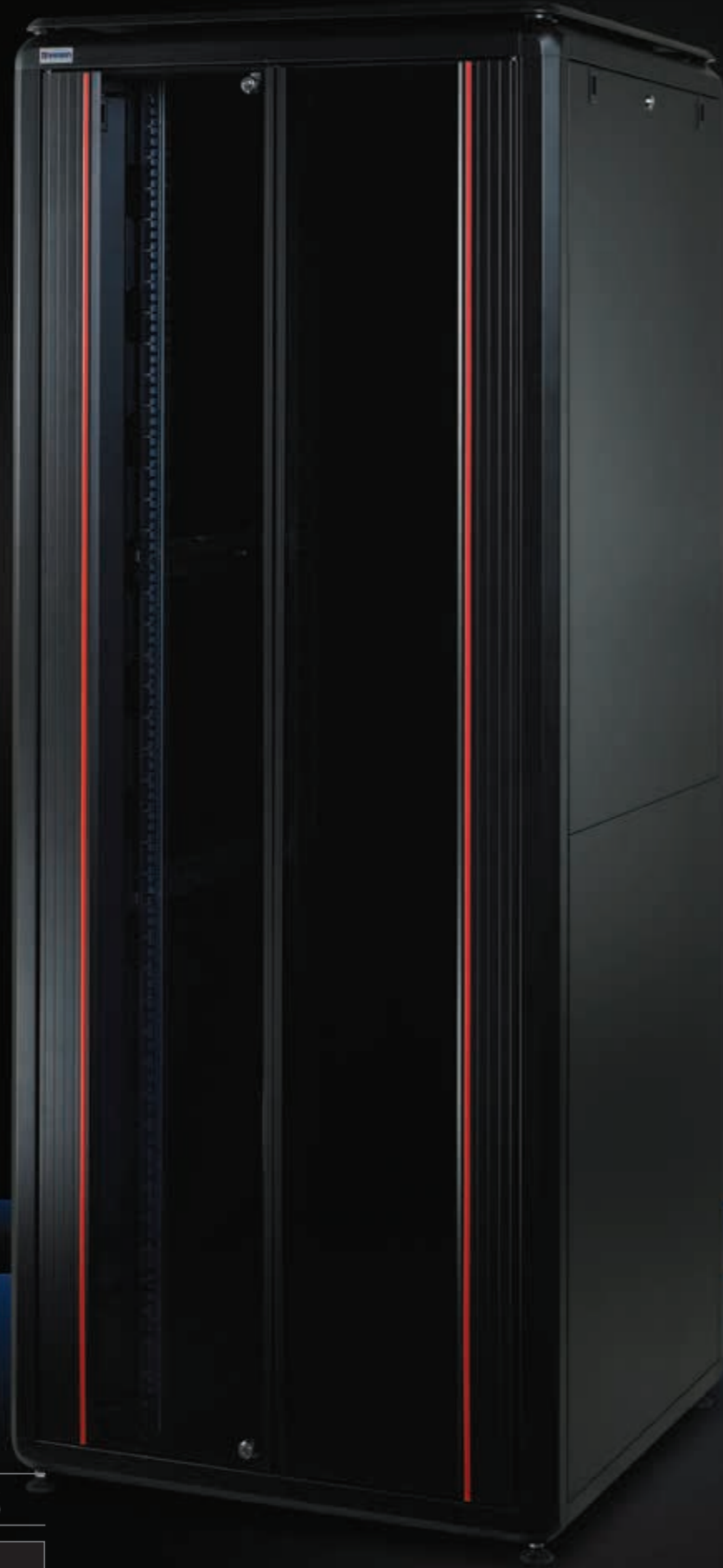
The door width to be selected should be selected among the door options with the related surface dimensions. When one of the door options is selected, it should be informed at the order with its selected surface.

The number 0 from the door options stands for "doorless". The standard door options: Front Door=1, Side Door=8, Rear Door=8.

GT V 800 x 800 FREE STANDING CABINET

WIDTH **W: 800mm**

DEPTH **D: 800mm**



COLOR OPTIONS



RAL 7035 LIGHT GREY

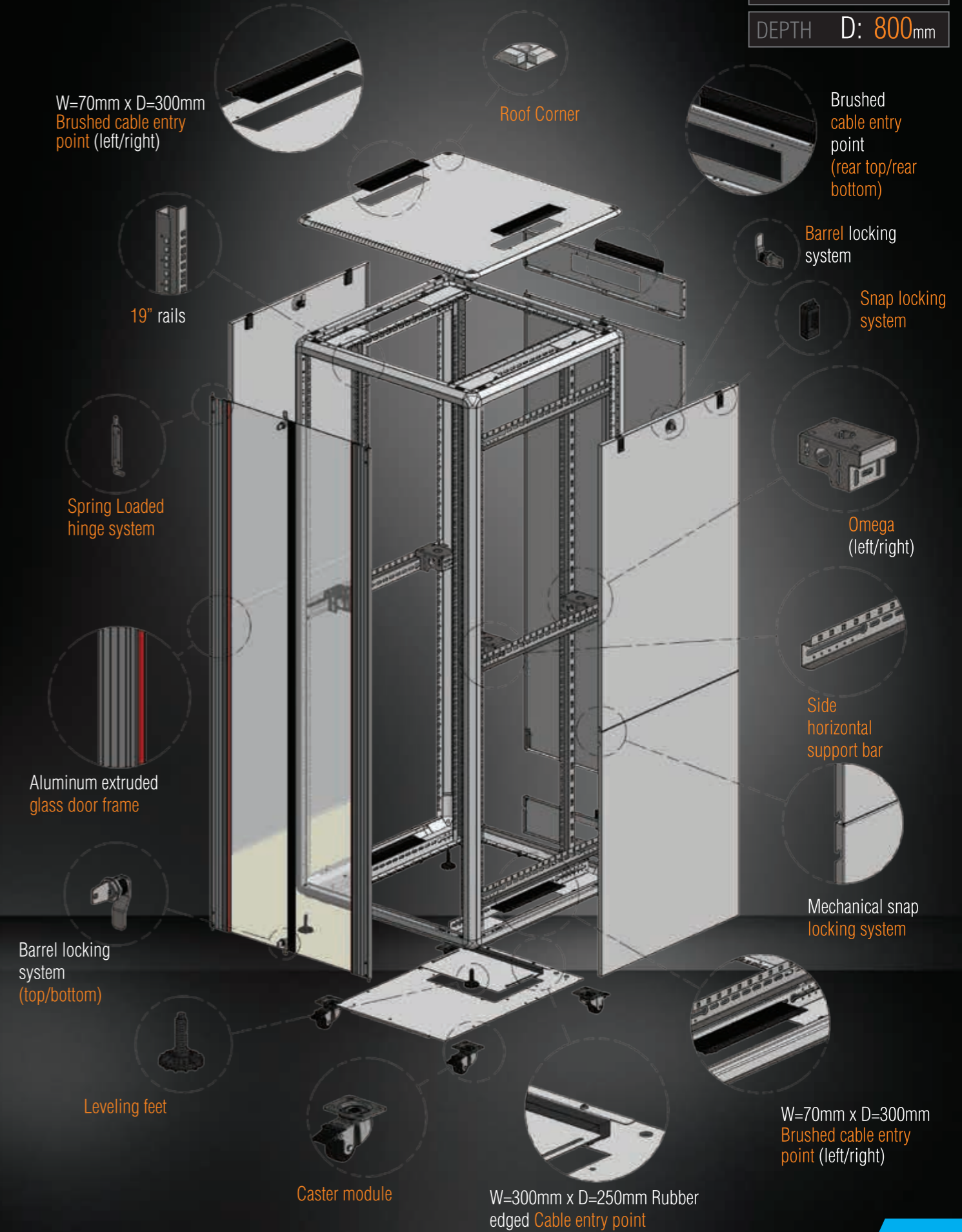
RAL 9005 BLACK

LOADING CAPACITY : **1500kg**

EXPLODED VIEW

WIDTH **W: 800mm**

DEPTH **D: 800mm**



GT V 800 x 800 FREE STANDING CABINET

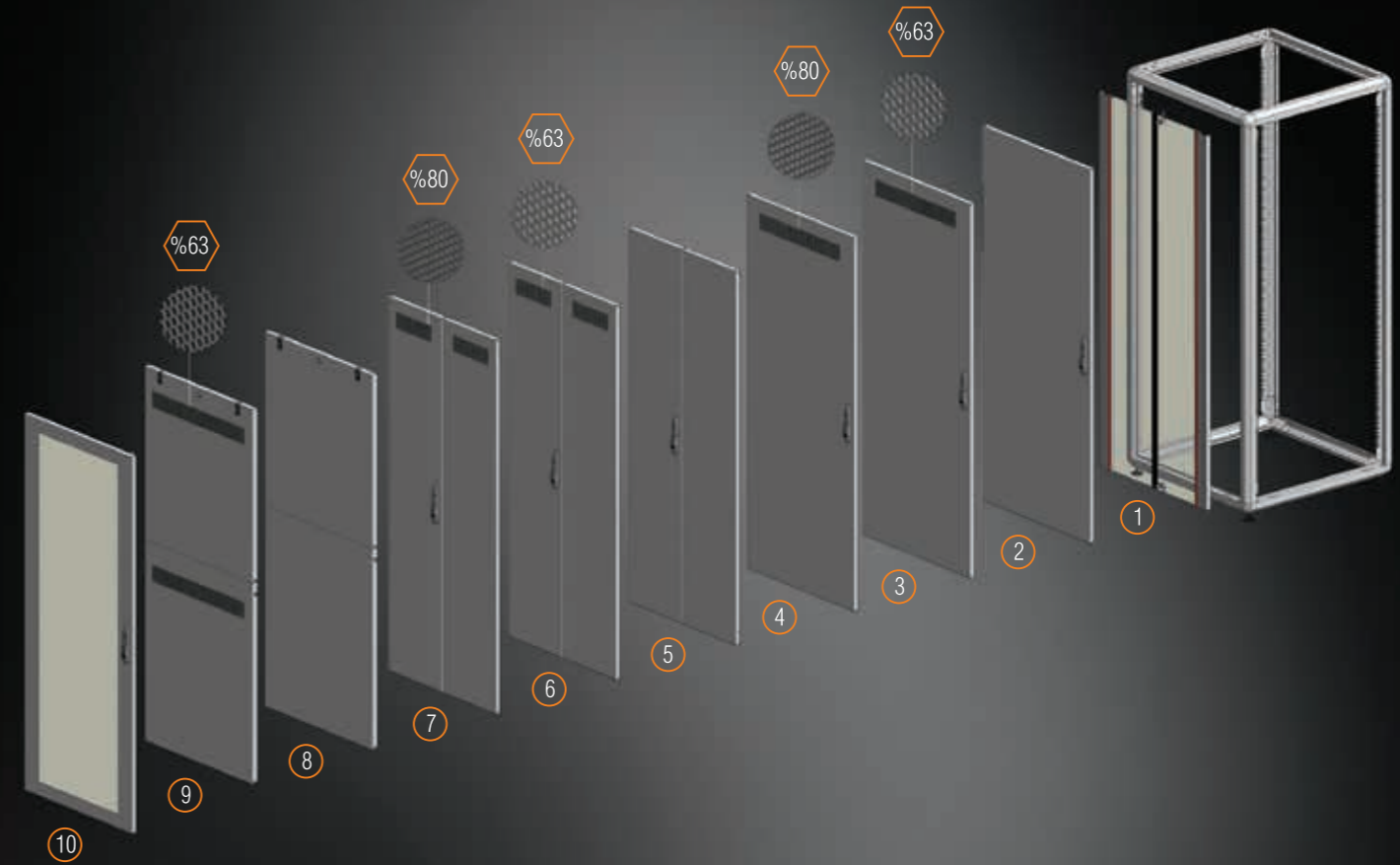
CONSTRUCTION DRAWINGS

WIDTH W: 800mm
DEPTH D: 800mm



W=800 DOOR OPTIONS

WIDTH W: 800mm
DEPTH D: 800mm



W=800 door options can be mounted on the side surfaces of the cabinet.

GT SERIES VERSATILE FREE STANDING CABINET W=800mm D=1000mm

Product Code	Product Description	U Measurement (U)	Product Dimensions WxDxH (mm)	Width: Between Rails (mm)	Depth: Between Rails (mm)	U Measurement (mm)	Package Dimensions WxDxH (mm)	Number in the Package (pcs)	Product Net Weight (kg)	Product Gross Weight (kg)	Number on Pallet (pcs)	Pallet Dimensions WxDxH (mm)	Pallet Weight (kg)	Height with Leveling Feet (mm)	Height with Caster Group (mm)
MR.GTV12U88.XX	12U W=800mm D=800mm VERSATILE	12U	800x800x719	19"	555	594	880x880x849	1	41,6	48	2	880x880x1698	96	749	779
MR.GTV16U88.XX	16U W=800mm D=800mm VERSATILE	16U	800x800x897	19"	555	772	880x880x1037	1	50	58	2	880x880x2074	116	927	957
MR.GTV20U88.XX	20U W=800mm D=800mm VERSATILE	20U	800x800x1075	19"	555	950	880x880x1215	1	59	67,7	2	880x880x2430	135	1105	1135
MR.GTV22U88.XX	22U W=800mm D=800mm VERSATILE	22U	800x800x1164	19"	555	1039	880x880x1305	1	63	72,6	2	880x880x2610	145	1194	1224
MR.GTV26U88.XX	26U W=800mm D=800mm VERSATILE	26U	800x800x1342	19"	555	1217	880x880x1482	1	71,7	82,5	1	880x880x1482	82,5	1372	1402
MR.GTV32U88.XX	32U W=800mm D=800mm VERSATILE	32U	800x800x1608	19"	555	1483	880x880x1748	1	84,6	95,6	1	880x880x1748	95,6	1638	1668
MR.GTV36U88.XX	36U W=800mm D=800mm VERSATILE	36U	800x800x1786	19"	555	1661	880x880x1926	1	93	105,3	1	880x880x1926	105,3	1816	1846
MR.GTV40U88.XX	40U W=800mm D=800mm VERSATILE	40U	800x800x1964	19"	555	1839	880x880x2104	1	102	115	1	880x880x2104	115	1994	2024
MR.GTV42U88.XX	42U W=800mm D=800mm VERSATILE	42U	800x800x2053	19"	555	1928	880x880x2193	1	106	120	1	880x880x2193	120	2083	2113
MR.GTV46U88.XX	46U W=800mm D=800mm VERSATILE	46U	800x800x2231	19"	555	2106	880x880x2371	1	114,7	129,6	1	880x880x2371	129,6	2261	2291

XX=Color Code, 02 means Light Grey RAL 7035 and 01 means Black RAL 9005, the code is added by the customer at the order.

The door width to be selected should be selected among the door options with the related surface dimensions. When one of the door options is selected, it should be informed at the order with its selected surface.

The number 0 from the door options stands for "doorless". The standard door options: Front Door=1, Side Door=8, Rear Door=8.

GT V 800 x 1000 FREE STANDING CABINET



WIDTH W: 800mm

DEPTH D: 1000mm

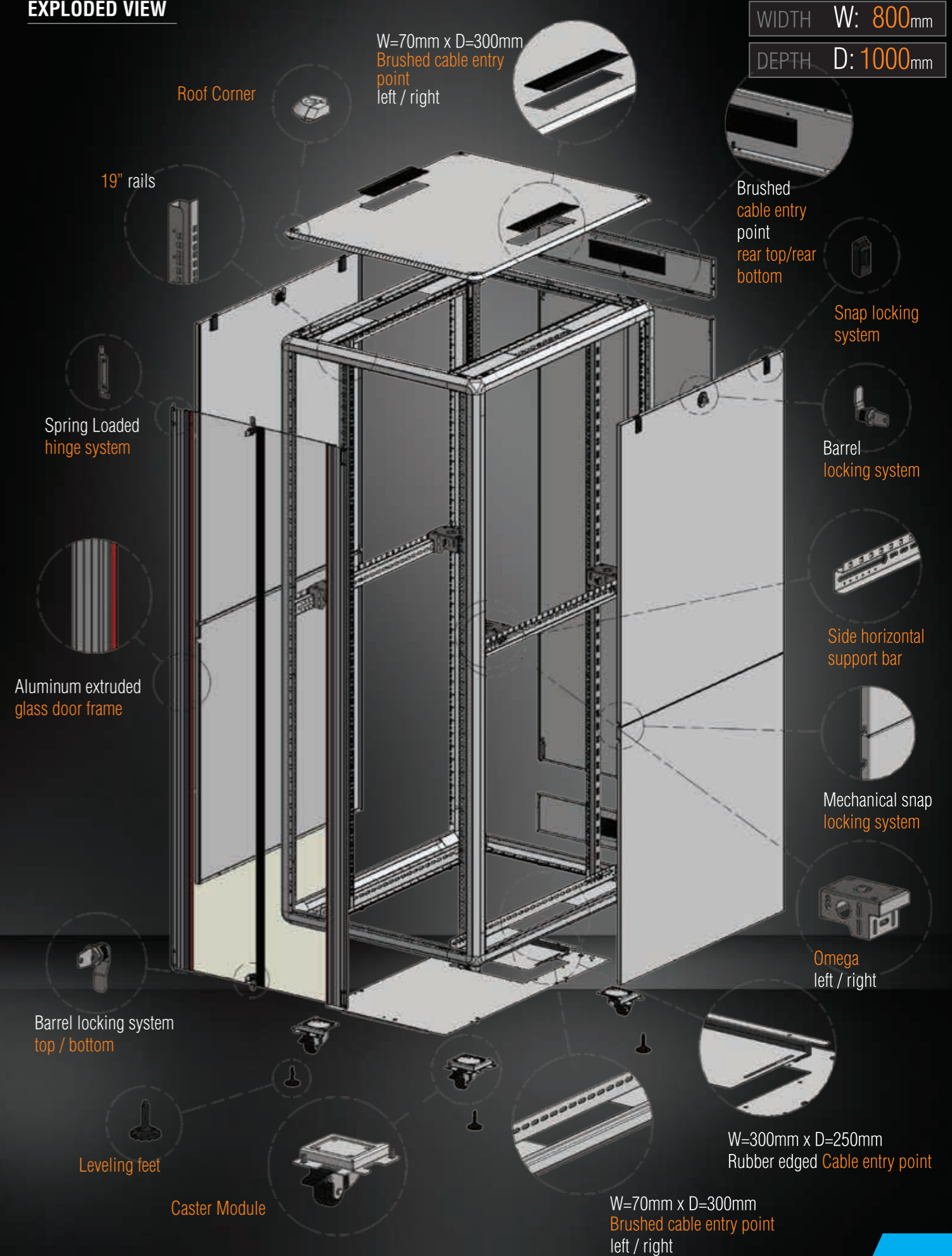
COLOR OPTIONS



RAL 7035 LIGHT GREY RAL 9005 BLACK

LOADING CAPACITY : 1500kg

EXPLODED VIEW



GT V 800 x 1000 FREE STANDING CABINET

CONSTRUCTION DRAWINGS

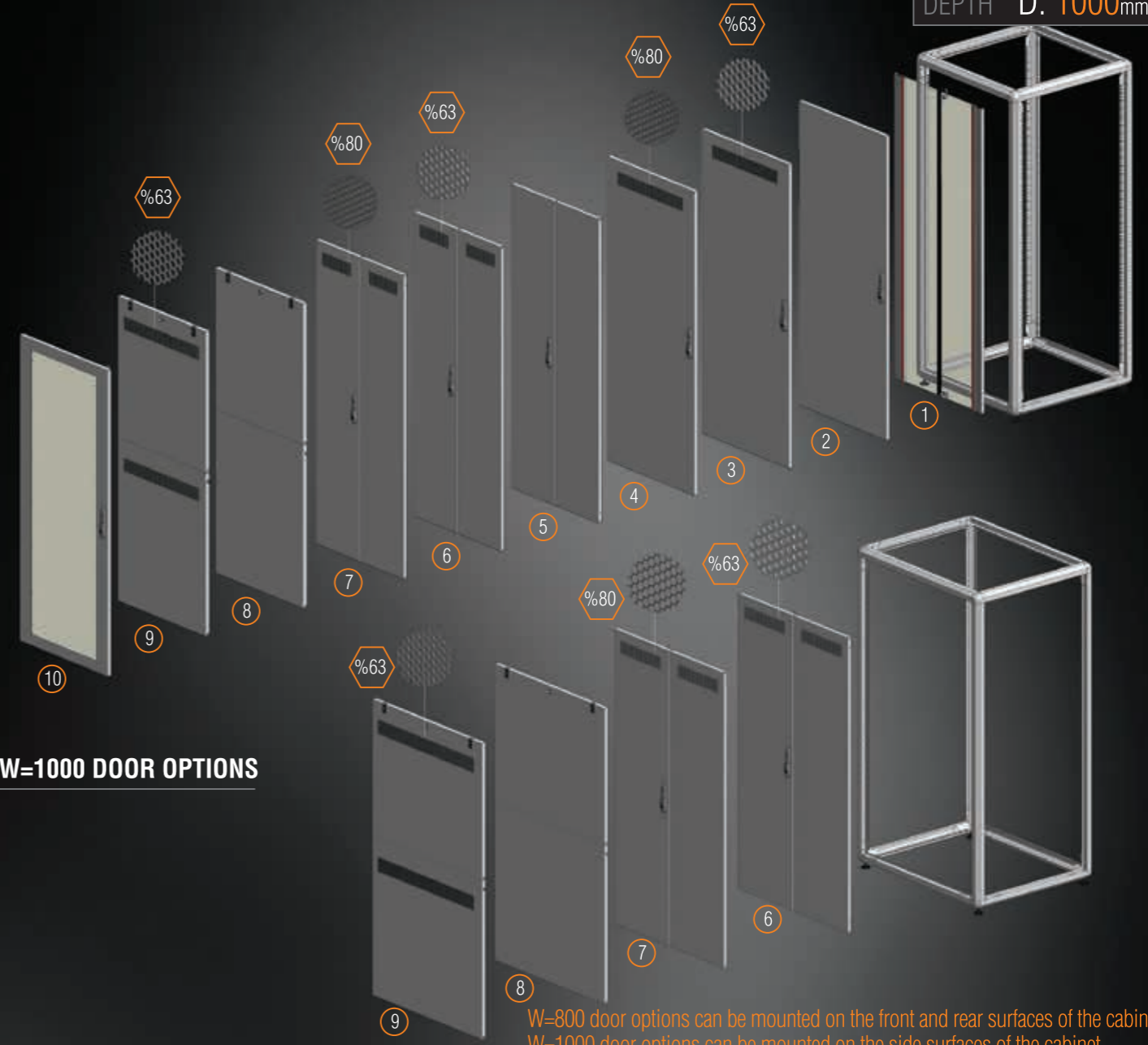
WIDTH W: 800mm
DEPTH D: 1000mm



ISOMETRIC VIEW

W=800 DOOR OPTIONS

WIDTH W: 800mm
DEPTH D: 1000mm



W=1000 DOOR OPTIONS

W=800 door options can be mounted on the front and rear surfaces of the cabinet.
W=1000 door options can be mounted on the side surfaces of the cabinet.

GT SERIES VERSATILE FREE STANDING CABINET W=800mm D=1000mm

Product Code	Product Description	U Measurement (U)	Product Dimensions WxDxH (mm)	Width Between Rails (mm)	Depth Between Rails (mm)	U Measurement (mm)	Package Dimensions WxDxH (mm)	Number in the Package (pcs)	Product Net Weight (kg)	Product Gross Weight (kg)	Number on Pallet (pcs)	Pallet Dimensions WxDxH (mm)	Pallet Weight (kg)	Height with Leveling Feet (mm)	Height with Caster Group (mm)
MR.GTV12U81.XX	12U W=800mm D=1000mm VERSATILE	12U	800x1000x719	19"	740	594	880x1080x849	1	46	53	2	880x1080x1698	106	749	779
MR.GTV16U81.XX	16U W=800mm D=1000mm VERSATILE	16U	800x1000x897	19"	740	772	880x1080x1037	1	55,4	63,7	2	880x1080x2074	127	927	957
MR.GTV20U81.XX	20U W=800mm D=1000mm VERSATILE	20U	800x1000x1075	19"	740	950	880x1080x1215	1	65	74,6	2	880x1080x2430	149	1105	1135
MR.GTV22U81.XX	22U W=800mm D=1000mm VERSATILE	22U	800x1000x1164	19"	740	1039	880x1080x1305	1	69,6	80	2	880x1080x2610	160	1194	1224
MR.GTV26U81.XX	26U W=800mm D=1000mm VERSATILE	26U	800x1000x1342	19"	740	1217	880x1080x1482	1	79	91	1	880x1080x1482	91	1372	1402
MR.GTV32U81.XX	32U W=800mm D=1000mm VERSATILE	32U	800x1000x1608	19"	740	1483	880x1080x1748	1	93,3	105,4	1	880x1080x1748	105,4	1638	1668
MR.GTV36U81.XX	36U W=800mm D=1000mm VERSATILE	36U	800x1000x1786	19"	740	1661	880x1080x1926	1	103	116	1	880x1080x1926	116	1816	1846
MR.GTV40U81.XX	40U W=800mm D=1000mm VERSATILE	40U	800x1000x1964	19"	740	1839	880x1080x2104	1	112,3	127	1	880x1080x2104	127	1994	2024
MR.GTV42U81.XX	42U W=800mm D=1000mm VERSATILE	42U	800x1000x2053	19"	740	1928	880x1080x2193	1	117	132	1	880x1080x2193	132	2083	2113
MR.GTV46U81.XX	46U W=800mm D=1000mm VERSATILE	46U	800x1000x2231	19"	740	2106	880x1080x2371	1	126,5	143	1	880x1080x2371	143	2261	2291

XX=Color Code, 02 means Light Grey RAL 7035 and 01 means Black RAL 9005, the code is added by the customer at the order.

The door width to be selected should be selected among the door options with the related surface dimensions.
When one of the door options is selected, it should be informed at the order with its selected surface.

The number 0 from the door options stands for "doorless".
The standard door options:
Front Door=1, Side Door=8, Rear Door=8.